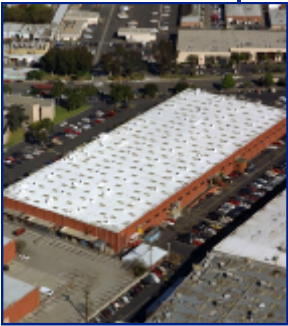


## Profile



©2000 National Coatings Corporation.  
All Rights Reserved. CH-ACS-001 11-01

# GILLETTE

*Size: 110,000 Square Feet*

*Location: Santa Monica, California*

## Challenge *Failed BUR Capsheet Roof*

- Deteriorated and failing BUR capsheet.
- Opportunity for more sustainable roof system.
- Opportunity for more comfortable warehouse building.

## Solution *AcryShield® Coating System*

- New SBS modified bitumen membrane coated with AcryShield.
- Outstanding UV protection with Cool Roof surface.
- Renewable roof surface system.

*The Gillette roof system was a model approach for tear-off re-roofs and new construction where owners can specify hybrid systems that from the beginning incorporate Cool Roof technology to provide more sustainable roofs that last much longer and save more money over time.*



*(800)423-9557, [www.nationalcoatings.com](http://www.nationalcoatings.com)*